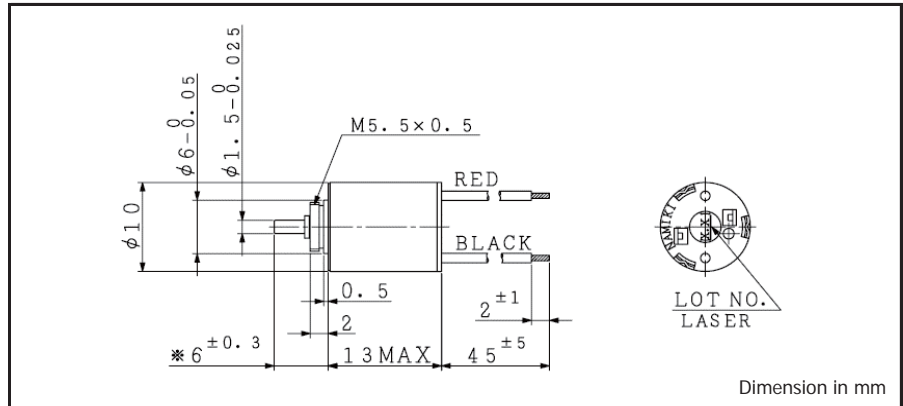
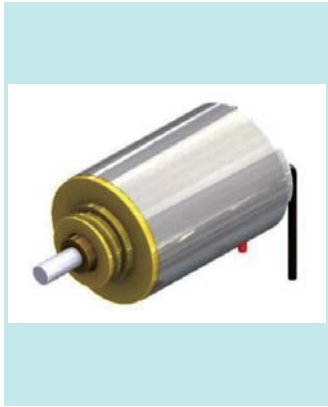


CMS 10-12 $\phi 10$, 0.14 mNm

Precious metal commutation, Sleeve bearing



For combination with gearhead: SSG10, SPG10

Ordering number	CMS10-1206	CMS10-1221	CMS10-1245	
1 Nominal voltage	3.7	7.4	12.0	V
2 Rated torque	0.138	0.141	0.144	mNm
3 Rated speed	17900	20900	24500	rpm
4 Rated current	103	61	45	mA
5 No load speed	21100	24500	28700	rpm
6 No load current	18	10	8	mA
7 Stall torque	0.92	0.96	1.00	mNm
8 Stall current	0.59	0.35	0.26	A
9 Output power	0.5	0.6	0.7	W
10 Max. efficiency	68	68	69	%
11 Terminal resistance	6.30	21.03	45.47	Ω
12 Friction torque	0.03	0.03	0.03	mNm
13 Back-EMF constant	0.170	0.293	0.406	mV/rpm
14 Torque constant	1.62	2.80	3.88	mNm/A
15 Slope of N-T curve	22795	25653	28823	rpm/mNm
16 Mechanical time constant	11.27	11.81	12.30	ms
17 Rotor inertia	0.03	0.03	0.03	gcm ²
18 Max. torque	0.46	0.48	0.50	mNm

Mechanical data

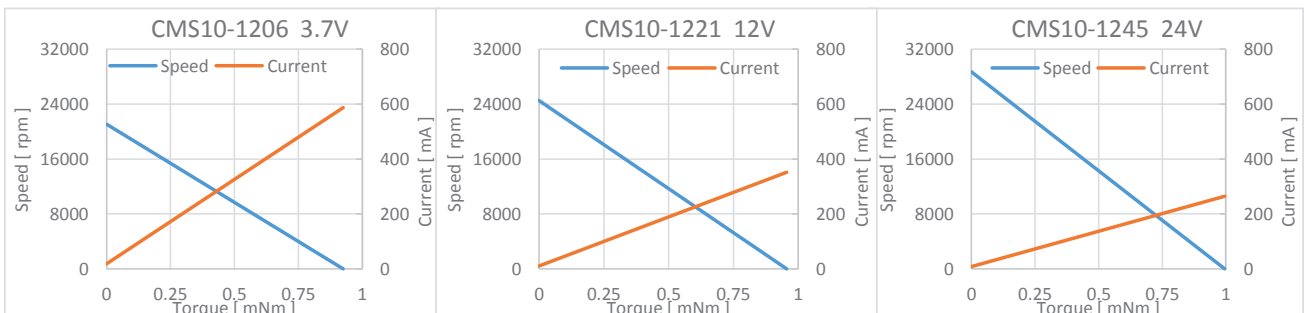
19 Shaft radial play	0.05	mm
20 Shaft axial play	0.03 ~ 0.2	mm
21 Max. shaft radial load	0.03 (5 mm)	N
22 Max. shaft axial load	0.1	N
23 Max. shaft axial load at standstill	4.9	N

Environmental specifications

24 Operating temperature	-20 ~ 60	$^{\circ}\text{C}$
25 Max. coil temperature	80	$^{\circ}\text{C}$

Other specifications

26 Weight	4.9	g
27 Number of segments	5	
28 Bearing type	Sintered sleeve	



V01

Namiki Precision Jewel Co., Ltd

TEL: 03-5390-7620 FAX: 03-5390-8082

URL: www.namiki.net

E-mail: kboinfo@namiki.net

Specifications are subject to change without notice.